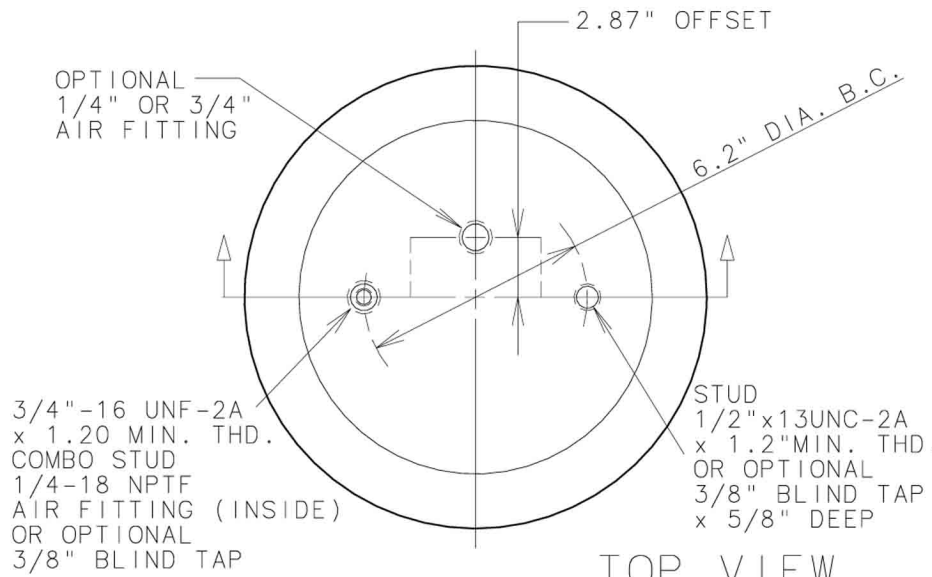
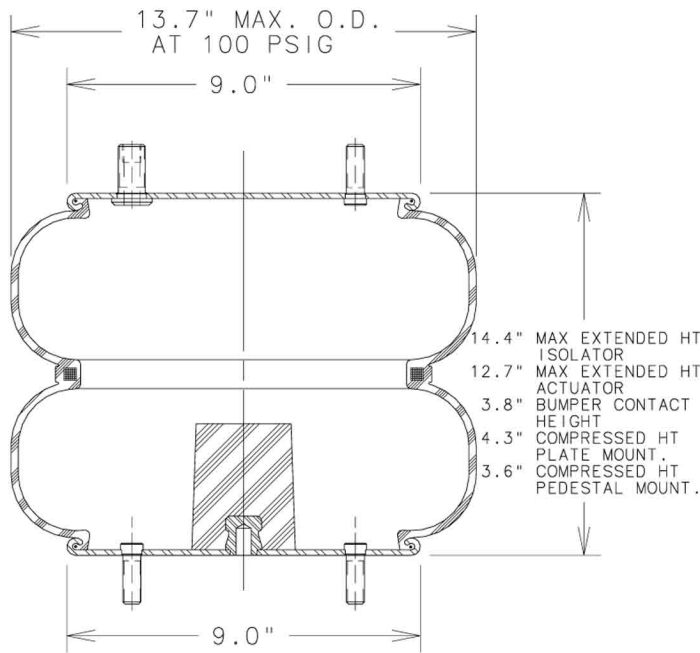


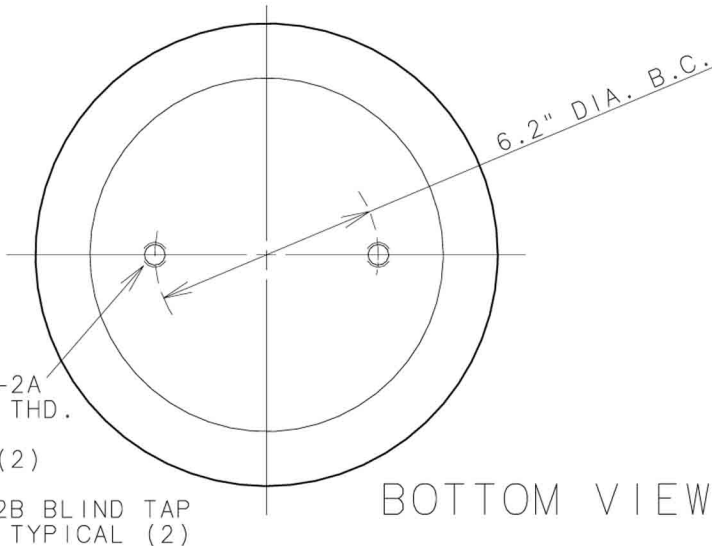
# 2B12-440



TOP VIEW



SIDE VIEW



BOTTOM VIEW

ASSEMBLY NUMBER	AIR FITTING	ATTACHMENTS		BUMPER INCLUDED
		TOP	BOTTOM	
2B12-416	1/4"-18 NPTF OFFSET 2.87"	BLIND TAPS	BLIND TAPS	NO
2B12-419	3/4"-18 NPTF OFFSET 1.75"	BLIND TAPS	BLIND TAPS	NO
2B12-440	1/4"-18 NPTF (INSIDE) OF COMBO STUD	STUDS ONE-1/2"-13UNC x 1.2 MIN THD OR ONE COMBO STUD- 3/4"-16UNF x 1.20 MIN THD	TWO-1/2"-13UNC x 1.2" MIN THD	YES
578923315 FLEX MEMBER ONLY				
ELASTOMER = NATURAL RUBBER FOR ALL ABOVE				

## SPRING FEATURES:

- LOAD RANGE (ISOLATOR).....1300-8100 lb
- DESIGN HEIGHT RANGE (ISOLATOR).....7.5-9.5 in
- USEABLE STROKE (ACTUATOR)(PLATE MOUNT)..8.4 in
- USEABLE STROKE (ACTUATOR)(PEDESTAL MOUNT)..9.1 in
- ASSEMBLY WEIGHT.....14.0 lb
- TEMPERATURE RANGE.....
- FORCE TO COMPRESS AT 0 PSIG (APPROX.)...120 lb
- NOMINAL FREE STANDING HT. AT 0 PSIG....8.3 in

\* NOTE: PRODUCT LIFE MAY BE SHORTENED WHEN OPERATING AT OR NEAR EXTREME TEMPERATURES. SEE TEMPERATURE RANGE GUIDELINES SECTION.

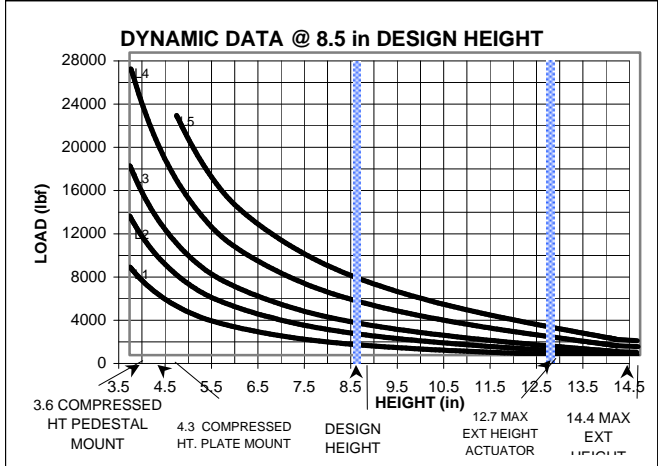
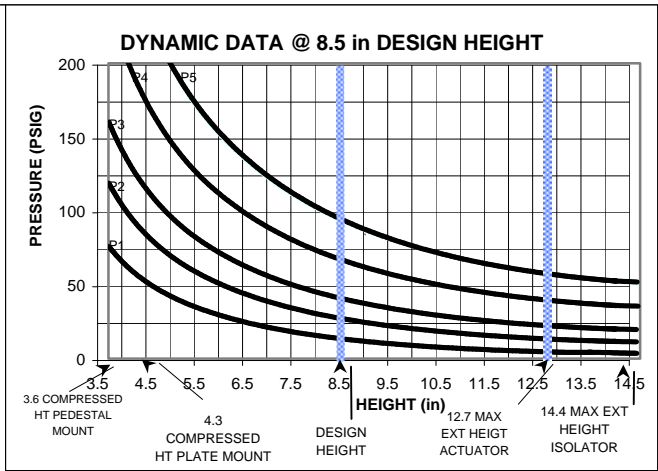
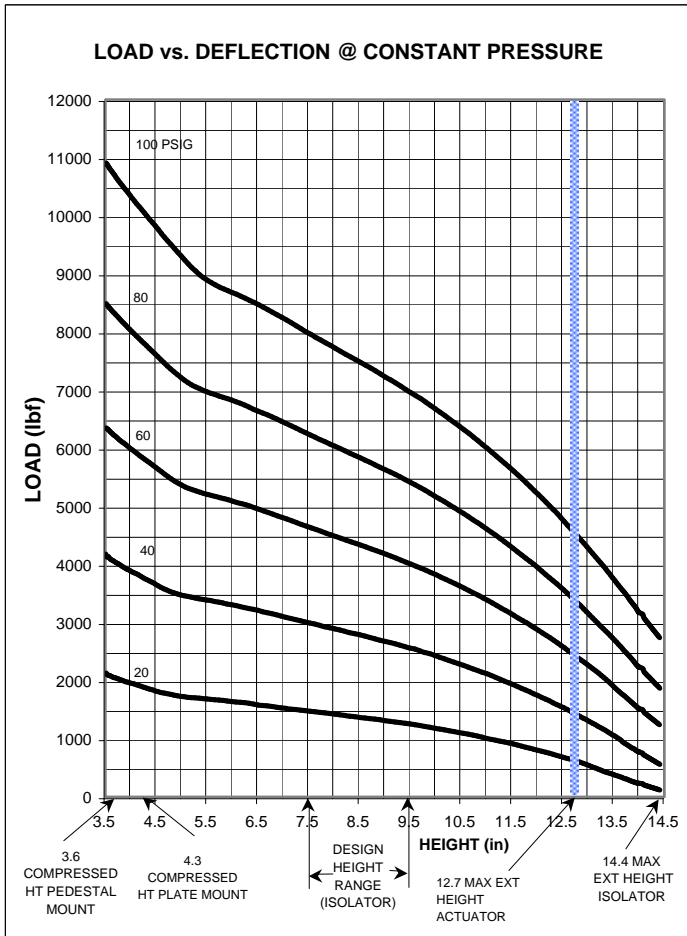
## OTHER OPTIONS:

- ALTERNATE BOLT LENGTHS AND SPACINGS
- ALTERNATE AIR FITTING SIZES AND LOCATIONS
- NO BUMPER OR ALTERNATE BUMPER

## RECOMMENDED MAX. TORQUE VALUES

3/4"-16 UNF COMBO STUD	1/4"-18 UNC AIR FITTING	1/2"-13 UNC STUD TYP. OF (3)
600 in-lb 50 ft-lb	240 in-lb 20 ft-lb	300 in-lb 25 ft-lb

NOTE: SEE GUIDELINES FOR PROPER APPLICATION OF THIS PRODUCT



**\*\*NOTE: MAXIMUM INFLATION PRESSURE IS 100 PSIG. MAXIMUM JOUCE PRESSURE IS 200 PSIG. IF YOUR APPLICATION WILL EXCEED THESE LIMITS, CONSULT A GOODYEAR REPRESENTATIVE FOR APPLICATION ASSISTANCE.**

## CONSTANT PRESSURE CHARACTERISTICS

Assembly Height (in)	Volume @ 100 PSIG (in <sup>3</sup> )	Force (lb)				
		@ 20 PSIG	@ 40 PSIG	@ 60 PSIG	@ 80 PSIG	@ 100 PSIG
14.4	1169	70	460	1150	1700	2600
13.0	1094	580	1300	2200	3200	4300
12.7	1077	660	1400	2400	3400	4500
12.0	1032	850	1800	2900	4000	5200
11.0	961	1050	2200	3400	4700	6100
9.5	844	1300	2600	4100	5500	7100
8.5	761	1450	2900	4400	6000	7600
7.5	676	1500	3100	4700	6400	8100
6.0	545	1700	3400	5200	6900	8800
5.0	456	1800	3600	5500	7400	9400
4.3	393	1800	3800	5800	7800	10000
3.6	329	1980	4100	6300	8400	10000
3.5	320	2000	4200	6400	8600	11000

## DYNAMIC CHARACTERISTICS

Design Height (in)	Load (lb)	Pressure (PSIG)	Spring Rate (lb/in)	Natural Frequency	
				cpm	Hz
9.5	1000	15	335	108	1.80
	2000	30	550	98	1.63
	3000	44	720	92	1.53
	5000	71	1115	89	1.48
8.5	1000	14	355	112	1.87
	2000	27	560	99	1.65
	3000	41	780	96	1.60
	5000	66	1180	91	1.52
7.5	1000	13	410	120	2.00
	2000	26	645	106	1.77
	3000	38	880	102	1.70
	5000	63	1310	96	1.60
	7000	87	1755	94	1.57