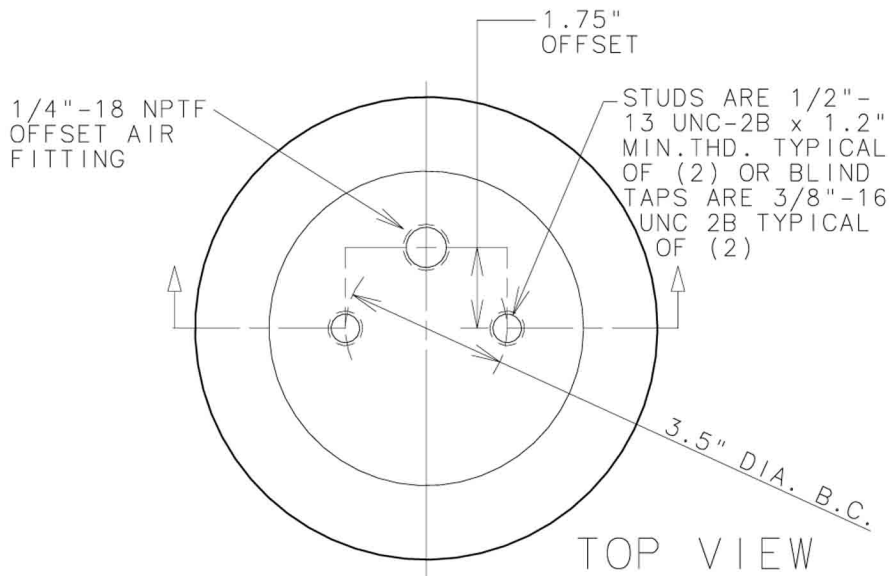
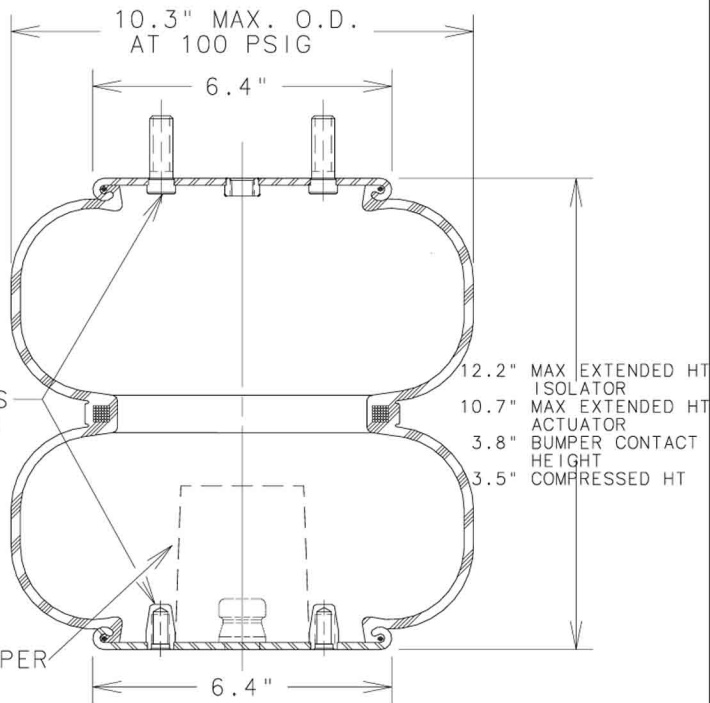


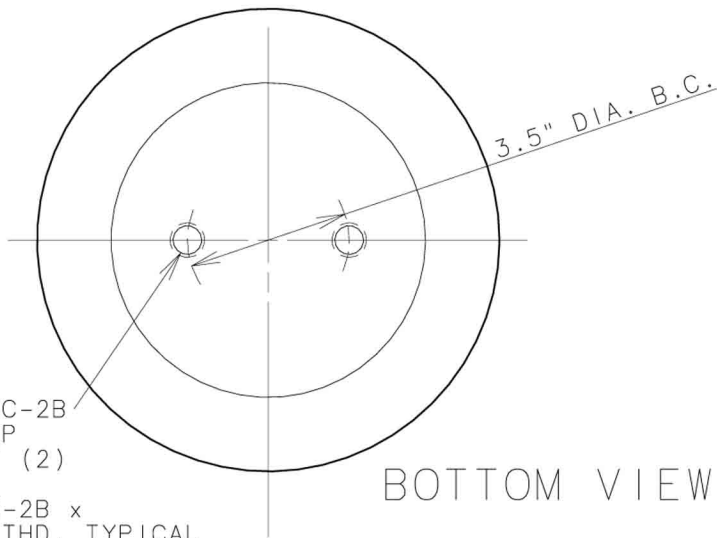
2B9-250



TOP VIEW



SIDE VIEW



BOTTOM VIEW

ASSEMBLY NUMBER	AIR FITTING	ATTACHMENTS		BUMPER INCLUDED
		TOP	BOTTOM	
2B9-250	1/4"-18 NPTF OFFSET 1.75"	STUDS	BLD TAPS	NO
2B9-251	1/4"-18 NPTF OFFSET 1.75"	STUDS	BLD TAPS	YES
2B9-253	1/4"-18 NPTF OFFSET 1.75" WITH UPPER BEAD PLATE ROTATED 90°	STUDS	BLD TAPS	YES
2B9-255	1/4"-18 NPTF OFFSET 1.75"	BLD TAPS	BLD TAPS	YES
2B9-256	1/4"-18 NPTF OFFSET 1.75"	BLD TAPS	BLD TAPS	NO
2B9-263	1/2"-14 NPTF OFFSET 1.75"	BLD TAPS	BLD TAPS	NO
2B9-275	3/4"-14 NPTF OFFSET 1.50"	BLD TAPS	BLD TAPS	NO

578923206 FLEX MEMBER ONLY
ELASTOMER=NATURAL RUBBER FOR ALL ABOVE

SPRING FEATURES:

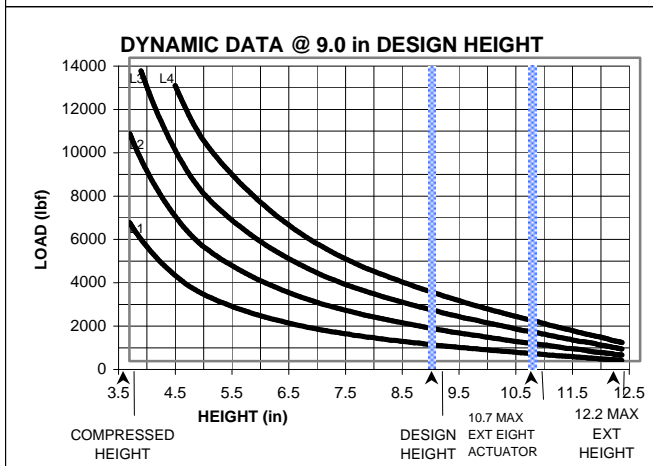
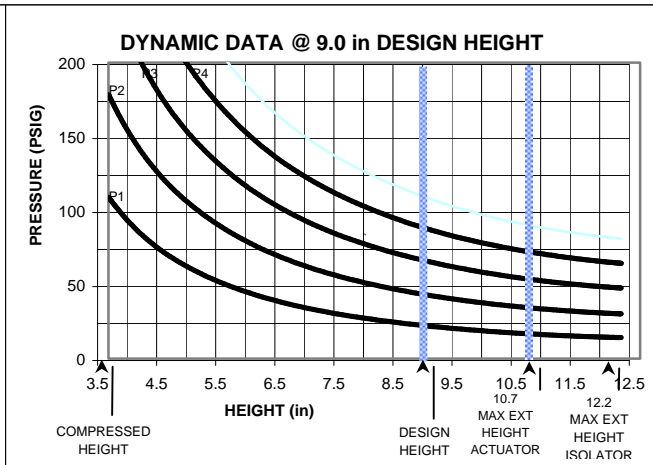
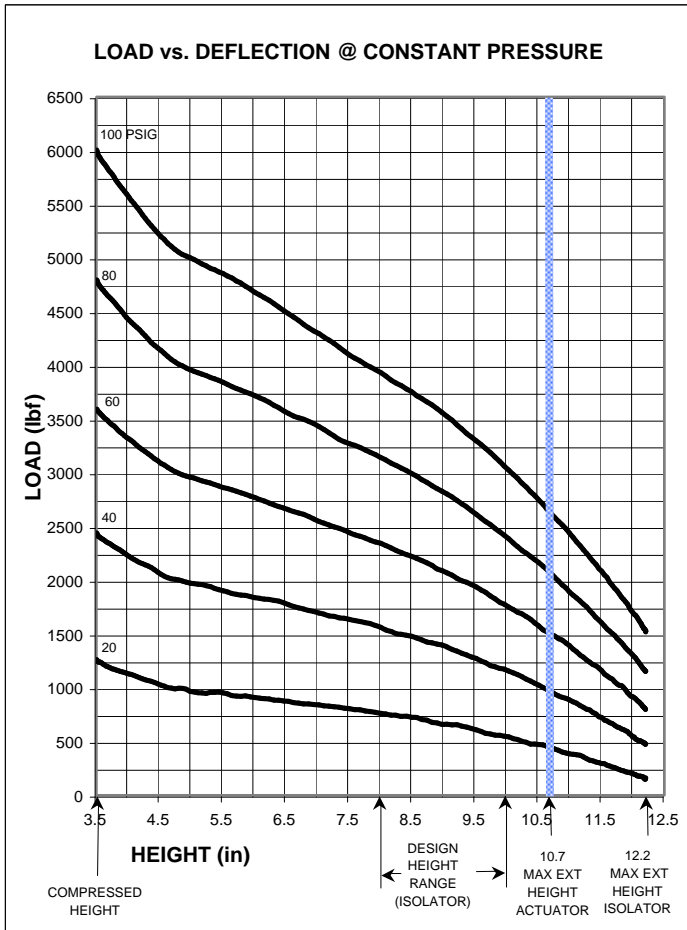
- LOAD RANGE (ISOLATOR).....540-3800 lb
- DESIGN HEIGHT RANGE (ISOLATOR).....8.0-9.0 in
- USEABLE STROKE w/o BUMPER (ACTUATOR)...7.2 in
- USEABLE STROKE WITH BUMPER (ACTUATOR)...6.9 in
- ASSEMBLY WEIGHT.....8.2 lb
- TEMPERATURE RANGE*.....
- FORCE TO COMPRESS AT 0 PSIG (APPROX.)...150 lb
- NOMINAL FREE STANDING HT. AT 0 PSIG....7.3 in

* NOTE: PRODUCT LIFE MAY BE SHORTENED WHEN OPERATING AT OR NEAR EXTREME TEMPERATURES. SEE TEMPERATURE RANGE GUIDELINES SECTION.

RECOMMENDED MAX. TORQUE VALUES

3/8"-16 UNC BLIND TAP TYP. OF (2)	1/4"-18 UNC AIR FITTING	1/2"-13 UNC TOP STUD TYP. OF (2)
300 in-lb 25 ft-lb	240 in-lb 20 ft-lb	300 in-lb 25 ft-lb

NOTE: SEE GUIDELINES FOR PROPER APPLICATION OF THIS PRODUCT



****NOTE: MAXIMUM INFLATION PRESSURE IS 100 PSIG. MAXIMUM JOUNCE PRESSURE IS 200 PSIG. IF YOUR APPLICATION WILL EXCEED THESE LIMITS, CONSULT A GOODYEAR REPRESENTATIVE FOR APPLICATION ASSISTANCE.**

CONSTANT PRESSURE CHARACTERISTICS

Assembly Height (in)	Volume @ 100 PSIG (in ³)	Force (lb)				
		@ 20 PSIG	@ 40 PSIG	@ 60 PSIG	@ 80 PSIG	@ 100 PSIG
12.2	500	120	440	800	1150	1500
11.5	487	280	700	1100	1500	2000
10.7	467	410	900	1400	1900	2500
10.0	449	540	1150	1700	2300	3000
9.0	418	640	1350	2000	2800	3500
8.0	382	750	1500	2300	3100	3800
7.5	363	800	1600	2400	3200	4000
6.5	320	850	1700	2600	3500	4400
5.5	273	900	1800	2800	3800	4800
4.5	221	1000	2000	3000	4100	5100
3.5	163	1250	2400	3600	4700	6000

DYNAMIC CHARACTERISTICS

Design Height (in)	Load (lb)	Pressure (PSIG)	Spring Rate (lb/in)	Natural Frequency	
				cpm	Hz
10.0	750	26	285	115	1.92
	1500	51	515	110	1.83
	2300	76	695	103	1.72
	3100	99	930	103	1.72
9.0	750	22	255	109	1.82
	1500	43	405	98	1.63
	2300	66	670	101	1.68
	3100	87	885	100	1.67
8.0	750	18	185	93	1.55
	1500	38	450	103	1.72
	2300	58	635	99	1.65
	3100	79	855	98	1.63
	3900	98	1025	96	1.60